



## Hillview Road

Chislehurst, BR7 6DR

*A stunning 3 double bedroom, 2 bathroom semi-detached bungalow*



## 25 Hillview Road

Price £625,000

A stunning 3 double bedroom, 2 bathroom semi-detached bungalow having been thoughtfully recently extended and fully refurbished providing over 1,100 square feet of versatile living accommodation and neutrally decorated throughout.

To the rear of the property is a beautifully finished open plan style kitchen/dining/living area with granite worktops/breakfast bar, integrated appliances including 5 ring electric hob, dishwasher, double fan oven, fridge/freezer and dishwasher. There are also two rooflights and an open fireplace. Bi-fold doors lead onto the level garden. The kitchen has a handy utility cupboard which houses the combination boiler and currently contains a further fridge/freezer, a washing machine and a large shelving unit.

All bedrooms are double and 2 benefit from bespoke built-in wardrobes, with the master bedroom boasting a contemporary style en-suite shower room with walk in double shower. There is a family bathroom that compliments the en-suite with a double shower over the bath. There are also new plantation style shutters to the front

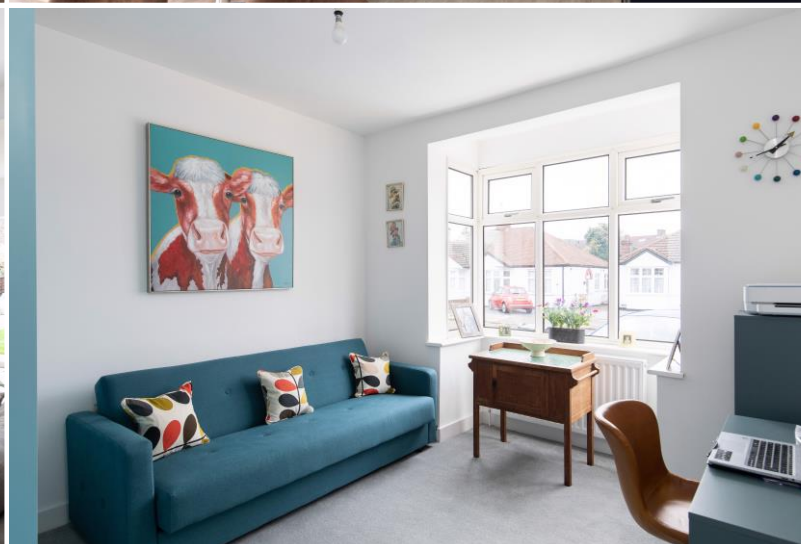
There is a lovely sunny 40ft rear garden, with a recently laid patio area, specifically designed to make the most of the afternoon and summer evenings, a recently laid lawn and a shed with electricity. The new driveway is low maintenance and has room for 2-3 cars and has a power socket ready to accommodate an electric car charging point.

Chislehurst High Street with Sainsburys supermarket and an eclectic mix of shops, cafes, restaurants and a couple of pubs is approximately 1/2 mile away. There is also a selection of good primary and secondary schools nearby.



- 3 Double Bedrooms
- En-suite to Master
- Family bathroom
- Versatile open plan style level living
  - Bi-fold doors
  - Utility cupboard

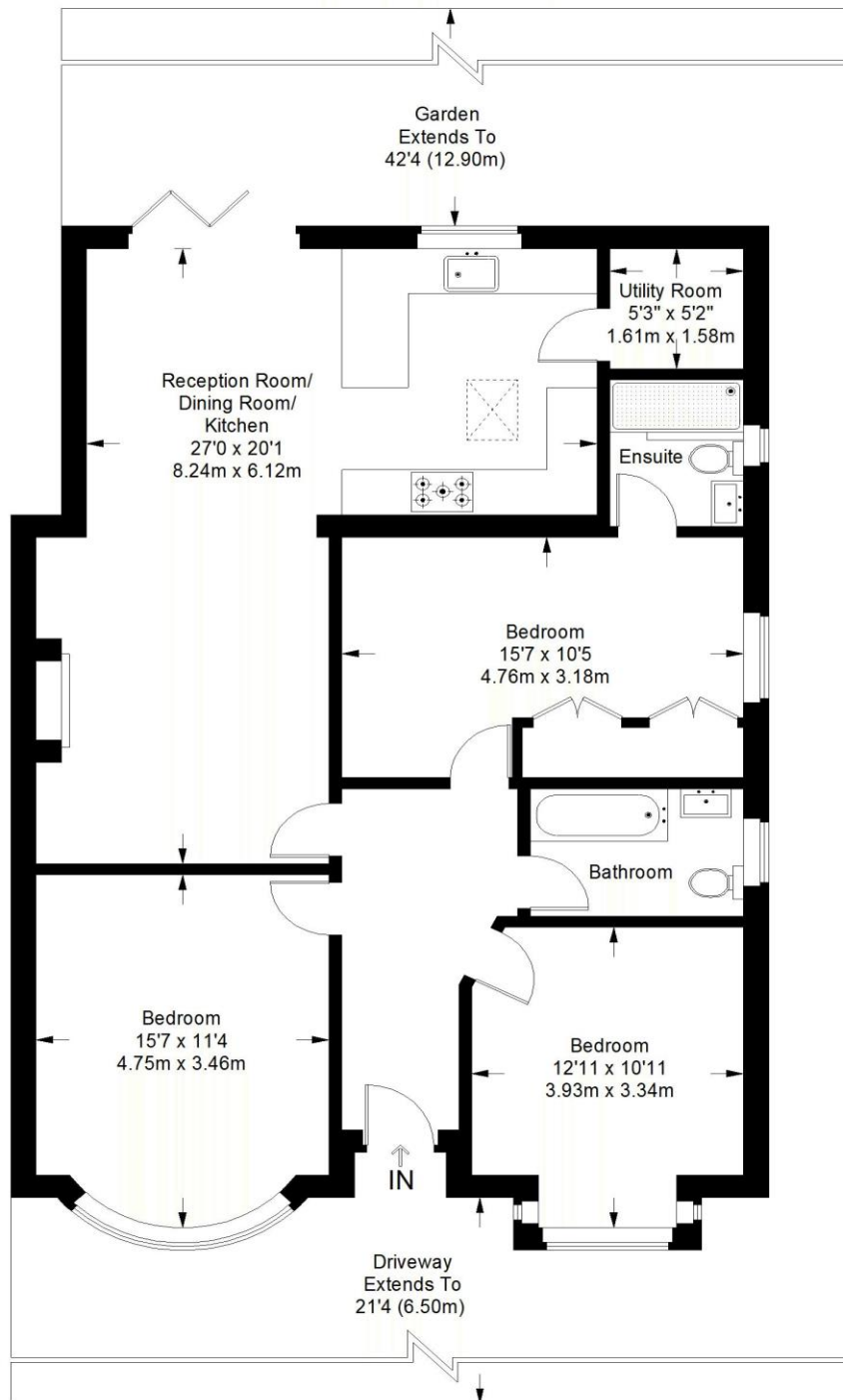
- Double glazing
- Combination boiler
- Neutrally decorated
- Built-in appliances
- Sunny 40ft level Garden
- Parking for 2-3 cars







# Hillview Road



**Ground Floor = 1121 sq ft**

Approximate Gross Internal Area  
GROUND FLOOR = 1121 sq ft / 104.14 sq m  
Total = 1121 sq ft / 104.14 sq m



This plan is for layout guidance only. Not drawn to scale unless stated. Windows and door openings are approximate. Whilst every care is taken in the preparation of this plan, please check all dimensions, shapes and compass bearings before making any decisions reliant upon them. (ID357409)

## Disclaimer

We have not tested any services, systems or appliances at this property. We strongly recommend that all the information which we provide is verified by yourselves on inspection, and by your Surveyor and Conveyancer.





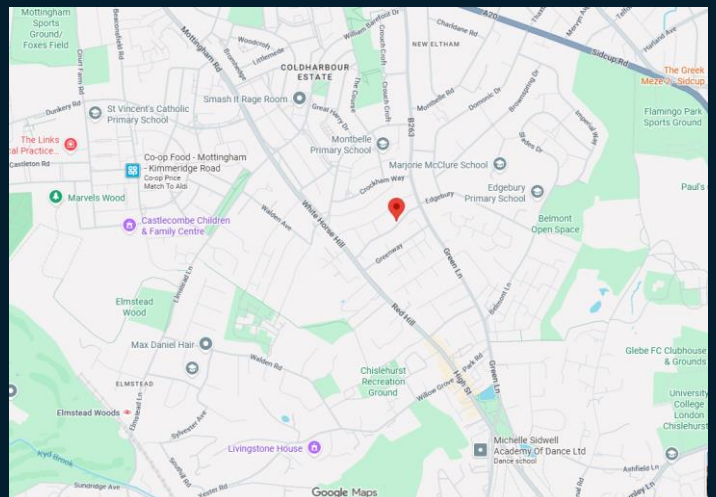
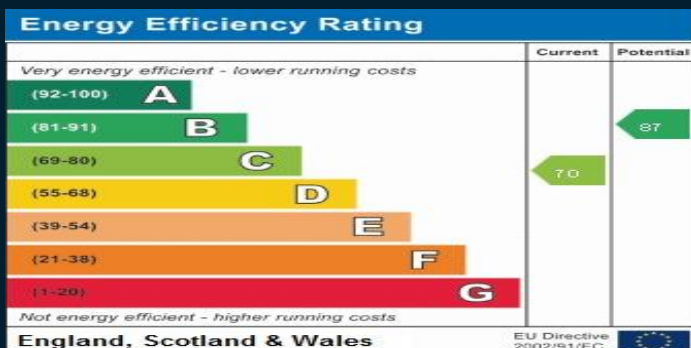
## Additional Information

**Council Tax Band: E**

**EPC Rating: C**

**Location: Chislehurst**

**Viewing: Via Browne Estates**



197 Widmore Road, Bromley, Kent BR1 2RG

Email: [sales@browne-estates.co.uk](mailto:sales@browne-estates.co.uk)

Tel: 020 8466 9101

[www.browne-estates.co.uk](http://www.browne-estates.co.uk)